

THE FULLERTON

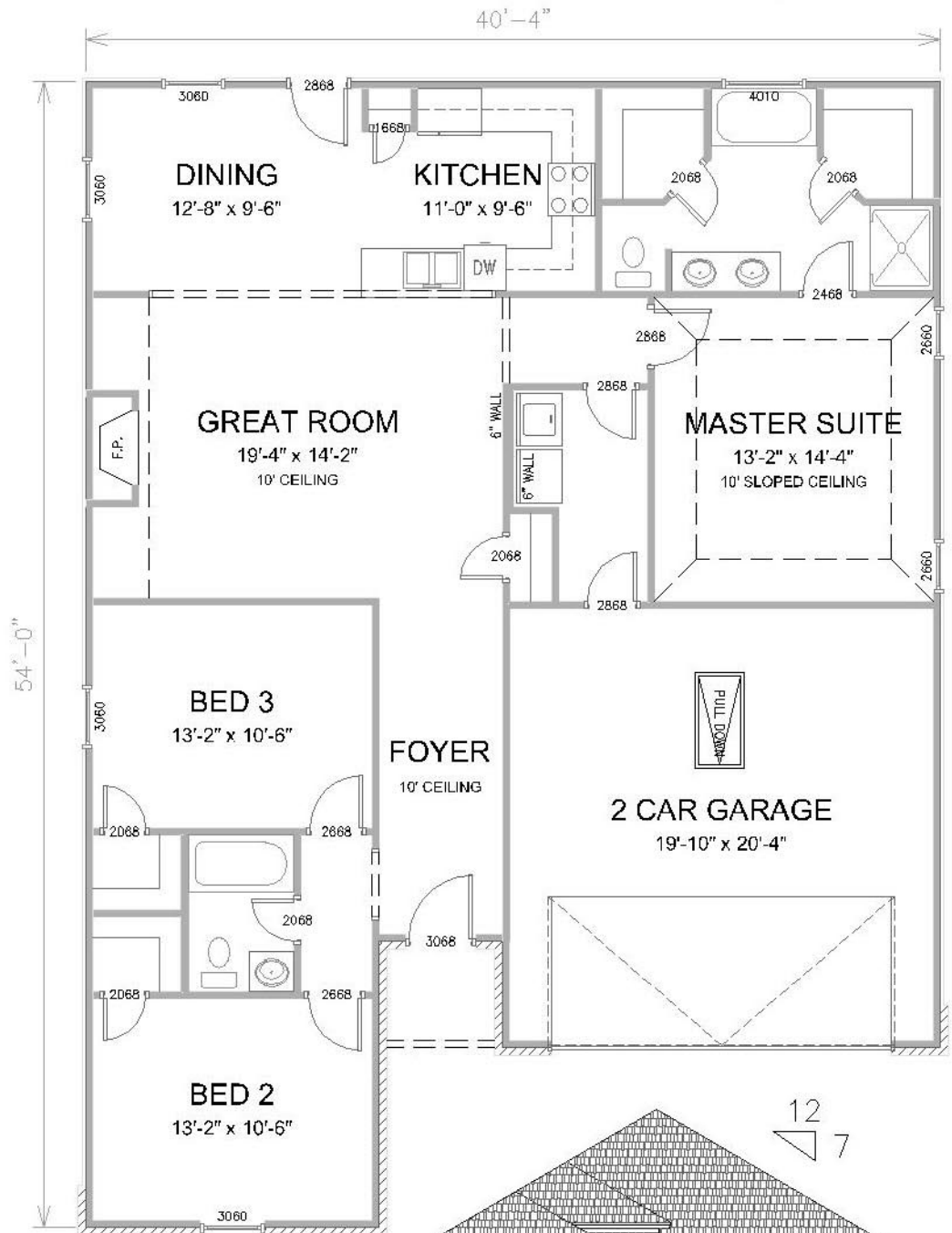
Standard features

- Choice of frontage options
- Covered front porch
- Maintenance-free siding
- Ceramic tile entry (3x3')
- Architectural roof shingles
- Ceiling fans w/light kits in bedrooms and great room
- Crown Molding in foyer, great room and master suite
- Floored attic storage with pulldown stairs
- Ceramic tile kitchen floor
- Ceramic tile dining area
- 8' ceilings throughout
- Granite-look formica countertops
- Cultured marble bathroom tops
- Smooth-top electric range
- Built-in microwave above range
- Spacious pantry
- High efficiency 13-SEER heat pump system

Optional upgrades

- Wood burning fireplace with custom mantel, \$1300
- Raised slope ceiling, \$500 per room
- Brick front on outside, \$1800

Value Build gives you the most home for the lowest price. We have 15 great floor plans that are exceptionally livable yet are economical to build.



FLOOR PLAN SPECIFICATIONS	
1ST FLOOR HEAT & COOL	1502 SQ.FT.
GARAGE	422 SQ.FT.
FRONT PORCH	29 SQ.FT.
TOTAL UNDER ROOF	1953 SQ.FT.
APPRAISAL INFORMATION	
1ST FLOOR	1535 SQ.FT.