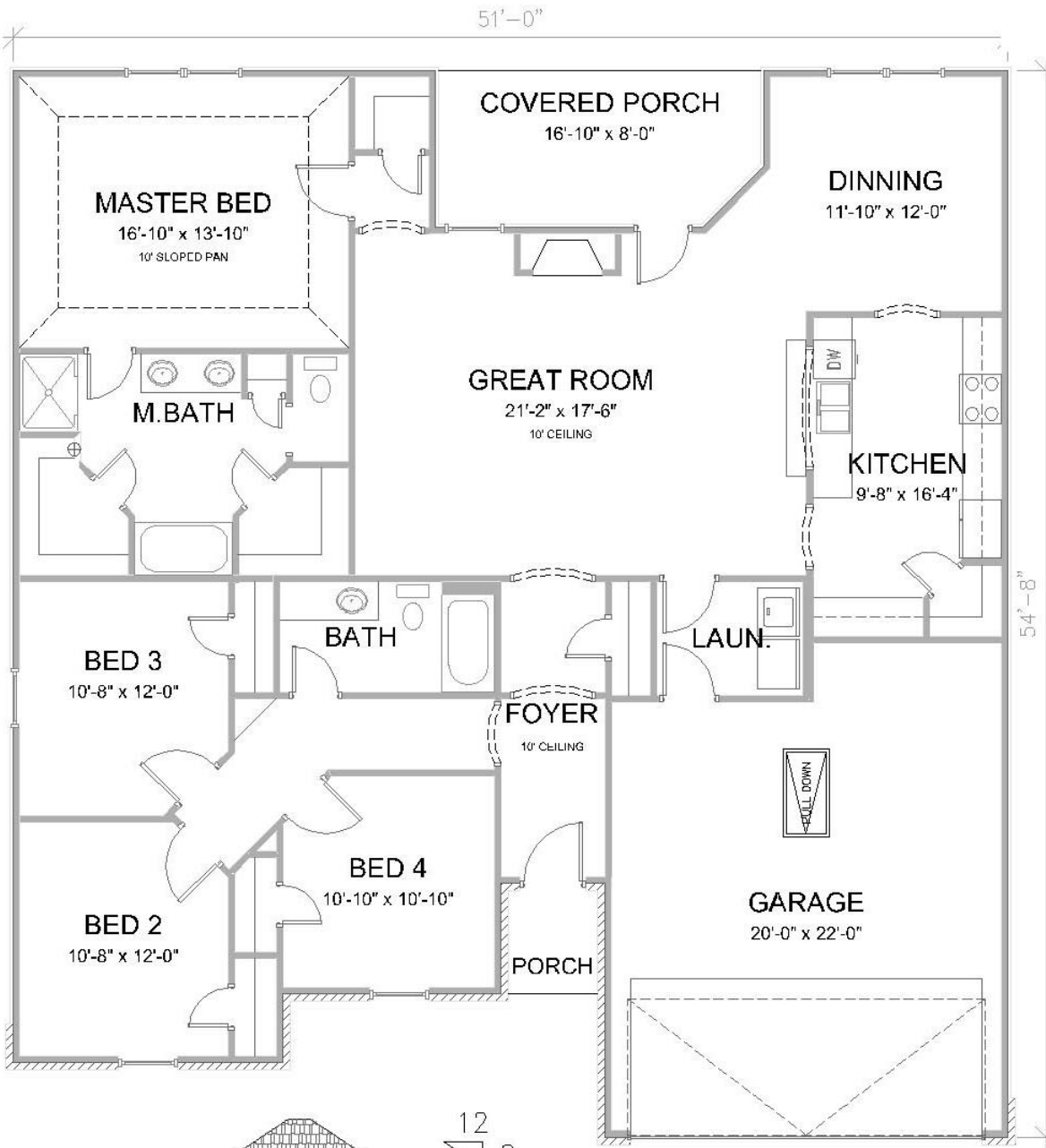


THE MONROE



Standard features

- Choice of frontage options
- Covered front porch
- Brick front
- Maintenance-free siding on sides/back
- Wood burning fireplace
- Custom-built mantel
- Ceramic tile entry (3x3')
- Architectural roof shingles
- Ceiling fans w/light kits in bedrooms and great room
- Crown Molding in foyer, great room and master suite
- Floored attic storage with pulldown stairs
- Ceramic tile kitchen floor
- Ceramic tile dining area
- 9' ceilings throughout
- Granite look formica countertops
- Cultured marble bathroom tops
- Smooth-top electric range
- Built-in microwave above range
- Spacious pantry
- High efficiency 13-SEER heat pump system

Value Build gives you the most home for the lowest price. We have 15 great floor plans that are exceptionally livable yet are economical to build.



12
8

FLOOR PLAN SPECIFICATIONS

| | |
|-----------------------|-------------|
| 1ST FLOOR HEAT & COOL | 1966 SQ.FT. |
| GARAGE | 488 SQ.FT. |
| FRONT PORCH | 30 SQ.FT. |
| BACK PORCH | 130 SQ.FT. |
| TOTAL UNDER ROOF | 2614 SQ.FT. |

APPRAISAL INFORMATION

| | |
|-----------|-------------|
| 1ST FLOOR | 2006 SQ.FT. |
|-----------|-------------|

Craig
HOMES
THE VALUE BUILDER